

RETREATMENT

Simplify your retreatment protocol and reduce your operation time



XP-endo® Shaper

- Unique file design and high-speed rotation enhance the efficiency of gutta percha plasticization
- Improved penetration capability and retreatment effectiveness, compared to other single file systems¹



XP-endo® Finisher R

- Optimised expansion capacity allows the semi-active tip to abrade root canal walls and dislodge filling material in difficult-to-reach areas.
- Seamless adaptation to all root canal morphologies



MaxWire®

Exclusive alloy

- Excellent resistance to cyclic fatigue²
- Optimal core diameter (ISO 30) improves efficiency in filling material removal, while maintaining superelasticity and extreme flexibility



Unique design

- Reduces remaining root filling material up to twice the efficacy of passive ultrasonic irrigation³
- Provides enhanced precision cleaning of the root canal, leaving walls cleaner than other available systems⁴



DR1



XP-endo® Shaper



XP-endo® Finisher R

Protocol and more information on www.fkg.ch/xpendo

¹ Azim, A. A., et al. (2018) Comparison Between Single-File Rotary Systems: Part 1-Efficiency, Effectiveness, And Adverse Effects In Endodontic Retreatment. J Endod 44(11): 1720-1724
² Elmaghy, A. et Elsakka, S. (2018) Cyclic Fatigue Resistance of XP-endo Shaper compared with Different Nickel-Titanium Alloy Instruments. Clin Oral Investig 22(3): 1433-1437
³ De-Deus, G., et al. (2019) XP-endo Finisher R Instrument optimizes the Removal of Root Filling Remnants in Oval-shaped Canal. Int Endod J
⁴ Alves, F. R. F., et al. (2016) Removal of Root Fillings in Curved Canal Using Either Reciprocating Single-or Rotary Multi-instrument Systems and Supplementary Step with the XP-endo Finisher. J Endod 42(7): 1114-1119

TREATMENT



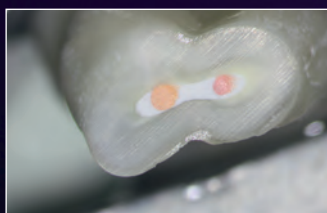
XP-endo[®] Finisher



Radiograph showing the bucco-lingual aspect of the maxillary first premolar



Cross-section 1 mm from the apex



Cross-section 7 mm from the apex

© Dr. Hubert Gołębek (Poland)
and Dr. Martin Trope (USA),
All rights reserved

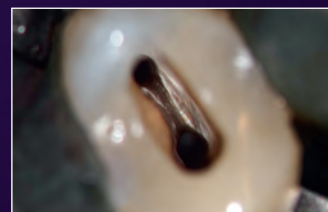
RETREATMENT



XP-endo[®] Finisher R



Photograph illustrating a case of retreatment before instrumentation



*After instrumentation
no debris is seen*



*Root filling material removal during
retreatment case*

© Dr. Gilberto Debelian (Norway)
and Dr. Klaus Lauterbach (Germany),
All rights reserved



XP-endo[®] Shaper

www.fkg.ch/xpendo